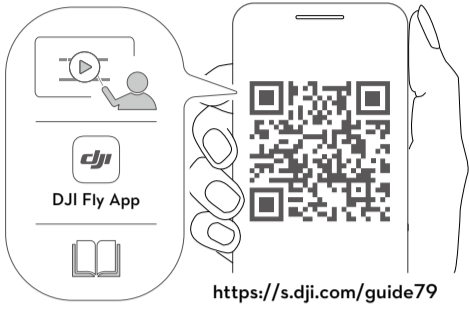


<https://www.dji.com/neo/downloads>
This content is subject to change without prior notice.

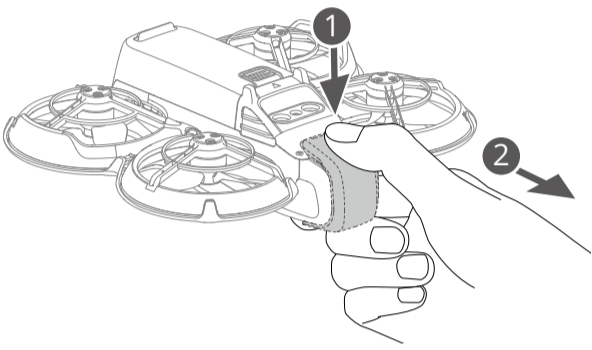


1 Scan the QR code for tutorial videos, DJI Fly app, and user manual.
扫描二维码观看教学视频、下载 DJI Fly App、阅读用户手册。

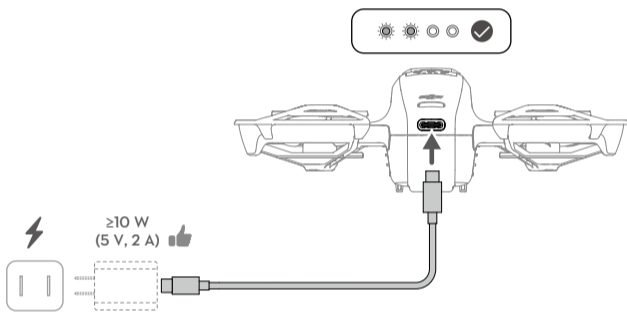


<https://s.dji.com/guide79>

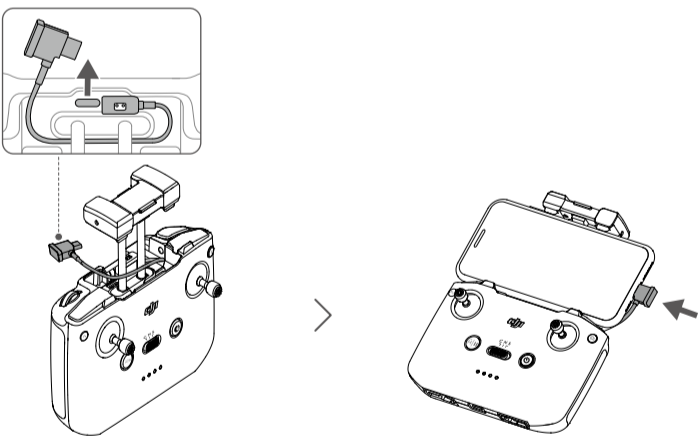
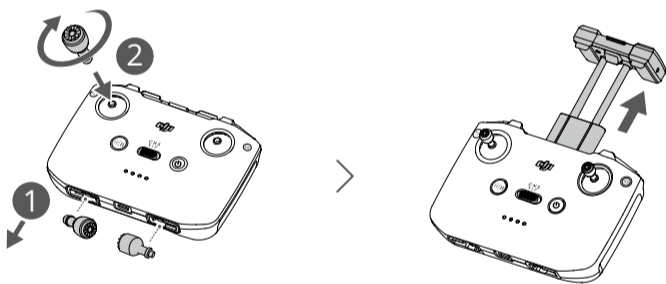
2 Press down to remove the gimbal protector.
按压取下云台保护罩。



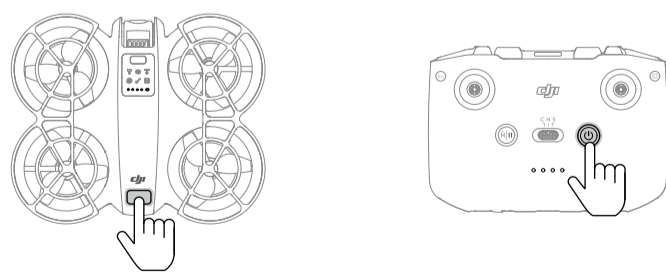
3 Charge to activate the Intelligent Flight Battery before using for the first time.
智能飞行电池首次使用需充电激活。



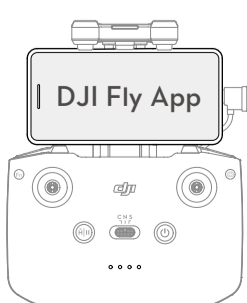
4 Mount the control sticks on the remote controller and connect the smartphone.
安装遥控器摇杆，并连接手机。



5 Power on/off: Press, then press and hold.
开机 / 关机：短按一次，再长按 2 秒以上。

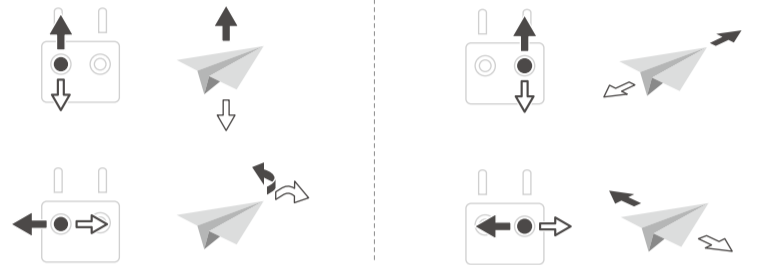
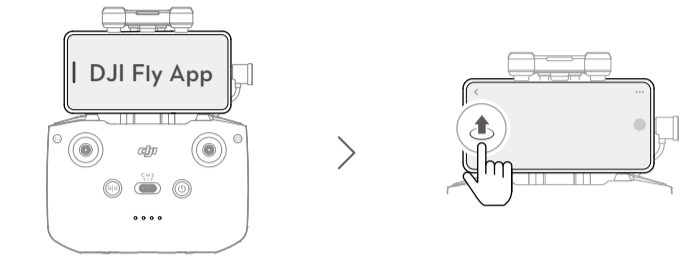


6 Run DJI Fly and follow the on-screen instructions to complete activation.
运行 DJI Fly，根据提示完成激活。



7 Choose from one of the following control methods.
选择以下任意一种操控方式：

**RC Control
遥控器操控**

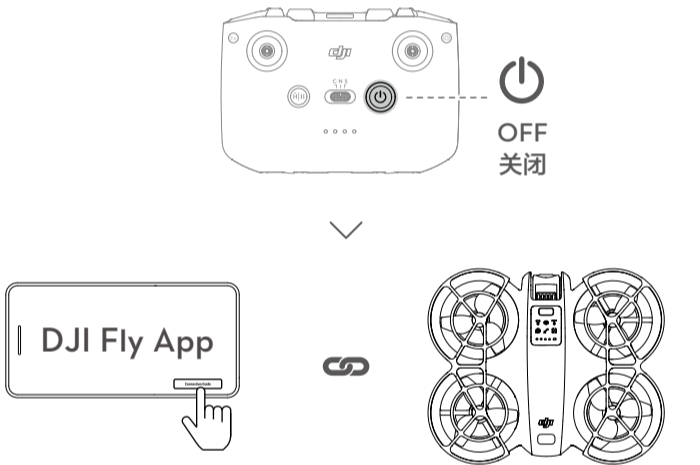


Mode 2 / 美国手 / 美國手 / Mode 2 / モード 2 / 모드 2 / Mod 2 / 美国手 / Режим 2 / Režim 2 / Mode 2 / Modus 2 / Modo 2 / Λειτουργία 2 / Tila 2 / Mode 2 / Način 2 / 2. mód / Modalità 2 / Stand 2 / Modus 2 / Tryb 2 / Modo 2 / Modo 2 / Modul 2 / Режим 2 / Režim 2 / Läge 2 / Mod 2 / 2. الوضع

**Mobile App Control
手机 App 操控**

Power off the remote controller. Tap Connection Guide on the bottom right corner of the DJI Fly app, select the aircraft model, and then follow the on-screen instructions to complete connection.

关闭遥控器。在 DJI Fly 首页，点击界面右下角的连接引导，选择机型，根据提示完成连接。



**Palm Control (Follow Mode by Default)
掌上操控 (默认跟随模式)**

